



Courtmaster
Royale...
the most
attractive,
rugged,
dependable
windscreen in
the game.

#105
ROYALE-SCREEN
OPEN MESH
(80% Opacity)

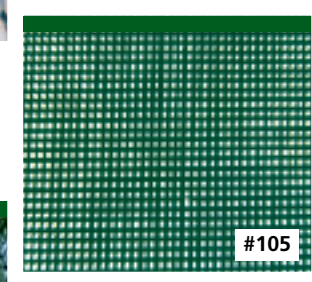
The industry's most durable wind-screen product. Made of 10 oz. vinyl-coated polyester. The extra heavy selvage is heat-sealed to form attractive, long-lasting hems. Brass grommets spaced every 12" along the perimeter for a professional looking installation. 6' or 9' heights. Dark Green or Black. Call for other available colors.

3-YEAR WARRANTY

#104
ROYALE-SCREEN
CLOSED MESH
(95% Opacity)

Made of extra-dense 13 oz. vinyl-coated polyester. Constructed with heat-sealed hems for superior performance and aesthetics. Brass grommets every 12" along the perimeter for a professional-looking installation. Special caution and consideration of wind conditions and fence strength should be taken before installation of any closed mesh windscreen. 6' or 9' heights. Dark Green or Black.

3-YEAR WARRANTY



HOW TO CHOOSE WINDSCREENS



#108
PRO SCREEN
*(80% Opacity Top and Bottom Section
 100% Opacity Middle Section)*

The ultimate windscreen for outdoor tennis. Center 5'-high strip is solid 18.5 oz. vinyl for maximum ball visibility and wind control. 2'-high top and bottom strips are open-weave vinyl-coated polyester for optimal airflow. Comes with two rows of anti-billow tabs along each PVC/vinyl seam. Four rows of brass grommets spaced every 12". Only available in 9' heights. Dark Green, Black, Royal Blue.

3-YEAR WARRANTY

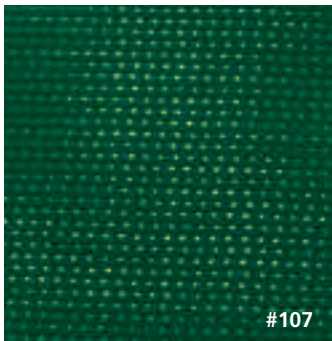


Windscreens are a functional and aesthetic addition to your tennis courts. They provide a dark backdrop against which players can see and react to ball movement better. They serve to break up gusting winds and allow consistent, even air flow. Windscreens minimize annoying distractions from nearby swimming pools, parking lots, highways, and players on adjacent courts. They give courts a professional appearance and increase playing pleasure by providing a consistent background and color.

With today's various windscreen materials, the decision regarding which one to use should be based primarily on cost and aesthetic considera-

tions rather than on wind reduction because all windscreens work well to break up gusting winds. Another consideration is how dense a windscreen can be installed without risking fence damage from strong winds.

Nine-foot windscreens are recommended for nearly all courts, and they should include anti-billow tabs as well as 6" x 12" openings placed 5' to 10' apart. Six-foot windscreens generally do not look as attractive as, nor reduce wind as well as, nine-foot windscreens. They should only be used if the facilities are located near the water with very strong winds, which would destroy fences with 9' windscreens attached.



#107
PVC OPEN MESH
(80% Opacity)

One of the industry's best values. Made of 7 1/2 oz. vinyl-coated polyester. 3 1/2 ply hems include an 18 oz. vinyl tape insert for added strength. Brass grommets spaced every 12" along perimeter for a professional looking installation. 5', 6' or 9' heights. Dark Green, Black or Blue standard. 15 other colors available.

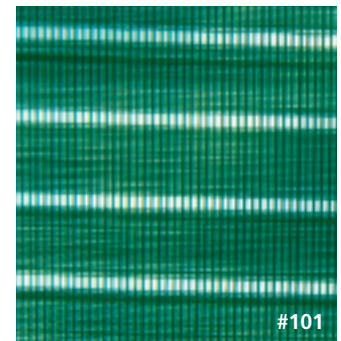
2-YEAR WARRANTY



#106
PVC CLOSED MESH (95% Opacity)

Minimizes player distraction while maximizing ball visibility. Made of 8 oz. vinyl-coated polyester. 3 1/2 ply hems include an 18 oz. vinyl tape insert for added strength. Brass grommets are spaced every 12" along perimeter for a professional-looking installation. Special caution and consideration of wind conditions and fence strength should be taken before installation of any closed mesh windscreen. 6' or 9' heights. Dark Green or Black.

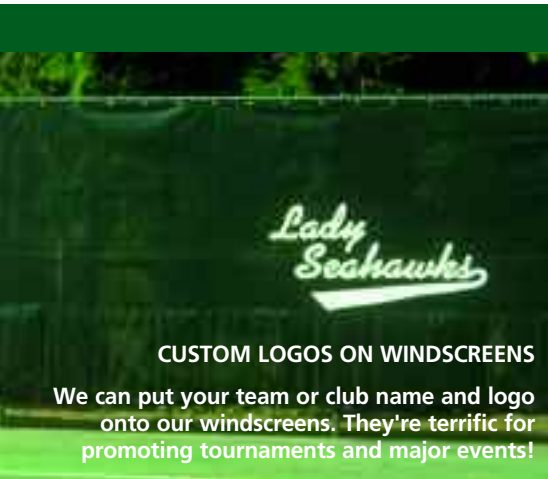
2-YEAR WARRANTY



#101
AIR MASTER I OPEN WEAVE
(80% Opacity)

Made of 6 oz. woven polypropylene and leno reinforced. Hems are 3-ply and sewn with two rows of heavy duty polyester thread. Brass grommets spaced every 15" along the perimeter. 6' or 9' heights. Dark Green, Black or Blue.

2-YEAR WARRANTY



CUSTOM LOGOS ON WINDSCREENS

We can put your team or club name and logo onto our windscreens. They're terrific for promoting tournaments and major events!

VENT AND WINDOW PATTERNS

Please note that when ordering wind-screens with vents or windows, you will automatically receive our standard straight-line configuration unless you specify differently at time of order. If you prefer a high/low configuration or a different straight-line design or placement, you must inform us when your order is placed. Call us if you need a copy of these standard designs and placements or to ask about other configurations.

Our most highly recommended windscreen is the *Mastershade Plus*. Made of knitted high-density polyethylene monofilament, it has superior UV-resistance and a special "heat-set" treatment that allows the windscreen to lie flat and straight on the fence with no billowing.

Mastershade Plus hems are 3-ply construction with heavy-duty binding, and anti-billow tabs are built into every nine-foot piece. It is moderately priced, easy to install, very durable, and looks good over time, making it perfect for nearly all applications.

However, if privacy is an issue you may need a more opaque windscreen to minimize visual dis-

tractions from public thoroughfares. The *Royale Screen*, made of vinyl-coated polyester, is an excellent choice and offers a high level of opacity.

For smaller budgets, the PVC offers high mildew and sun resistance at an excellent price, while the polypropylene *Air Master I* is an excellent choice for controlling wind while providing consistent airflow. They both look great on the court and add to your playing pleasure.

At the high-end, the nine-foot high *Pro Screen* offers a particularly attractive and distinctive look with its 5' high vinyl center (for maximum ball visibility) and 2' high PVC top and bottom (for optimal airflow).

#103

**#103
AIR MASTER I CLOSED WEAVE
(95% Opacity)**

An excellent site barrier and background material. Made of 7 oz. woven polypropylene. Hems are 3-ply and sewn with two rows of heavy duty polyester thread. Brass grommets spaced every 15" along the perimeter. Special caution and consideration of wind conditions and fence strength should be taken before installation of any closed mesh windscreen. 6' or 9' heights. Dark Green or Black.

2-YEAR WARRANTY

#100NL

**#100NL
AIR MASTER III OPEN WEAVE
(78% Opacity)**

Made of 5.5 oz non-leno woven polypropylene. Hems are 3-ply and sewn with two rows of heavy duty polyester thread. Brass grommets are spaced every 15" along the perimeter. 6' or 9' heights. Dark Green.

#274

**#274 MASTERSHADE PLUS
(75% Opacity)**

Combines long lasting good looks with increased stability and opacity due to a special "heat set" treatment applied to the fabric—at a very attractive price. *Mastershade Plus* windscreen lays flat and straight on the fence with no billowing or rippling. Hems are 3-ply construction with a heavy-duty 18 oz. vinyl binding and brass grommets every 15". 9 foot pieces come with anti-billow tabs built into the construction. 6' or 9' heights (heights can vary -3" to +3"). Dark Green or Black.

3-YEAR WARRANTY

#109

MASTERSHADE (70% Opacity)

A low-cost, long-lasting alternative to custom windscreens. Made of 8 oz. knitted high-density polyethylene monofilament with superior UV-resistance properties. No grommets needed. Extra heavy selvage along top and bottom hems provide for more secure installations with less scalloping than other knitted windscreens. Comes in 6' or 9' high rolls and 50', 100' or 120' long. Dark Green or Black.

3-YEAR WARRANTY

#109	6' x 120'	42 lbs.
#2392	6' x 100'	35 lbs.
#2393	6' x 50'	18 lbs.
#110	9' x 120'	60 lbs.
#2394	9' x 100'	50 lbs.
#2395	9' x 50'	25 lbs.

Also available hemmed and grommeted:

#129	6' x 120'	42 lbs.
#131	6' x 100'	35 lbs.
#132	6' x 50'	18 lbs.
#130	9' x 120'	60 lbs.
#133	9' x 100'	50 lbs.
#134	9' x 50'	25 lbs.

